



Two way light rail line non-dedicated (within traffic lane) on The Parade.

Sydenham Road stop on The Parade, west of intersection at Sydenham Road. Either:

- New pedestrian crossing to be installed to allow pedestrians to cross The Parade west of Sydenham Road intersection;
- Install traffic signals at Parade-Sydenham Road intersection and combine tram stop with traffic signals to allow pedestrian crossing of The Parade.

Osmond Terrace stop on The Parade, 70m west of intersection at Osmond Terrace. New pedestrian crossing to be installed to allow pedestrians to cross The Parade.



Two way light rail line non-dedicated (within traffic lane) on The Parade.

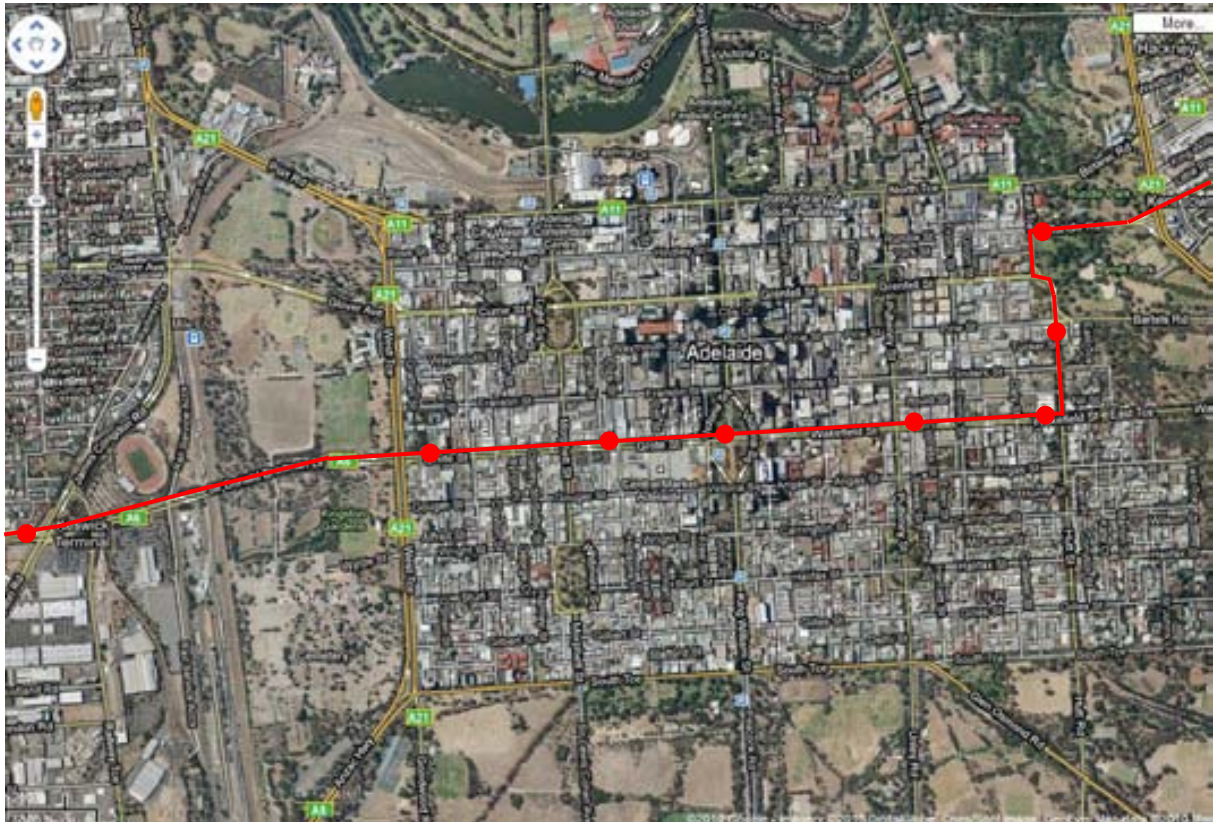
George Street stop on The Parade, west of intersection at George Street. Either:

- New pedestrian crossing to be installed to allow pedestrians to cross The Parade west of George Street intersection;
- Combine tram stop with existing intersection, similar to existing City South stop, to allow pedestrian crossing at existing traffic signals.

Portrush Road terminus on The Parade, 70m west of intersection at Portrush Road. New pedestrian crossing to be installed to allow pedestrians to cross The Parade west of Portrush Road intersection. End of line is a single lane within existing median (similar to current arrangement at western end of Jetty Road) to avoid disrupting traffic whilst tram is at terminus.

4 City Section

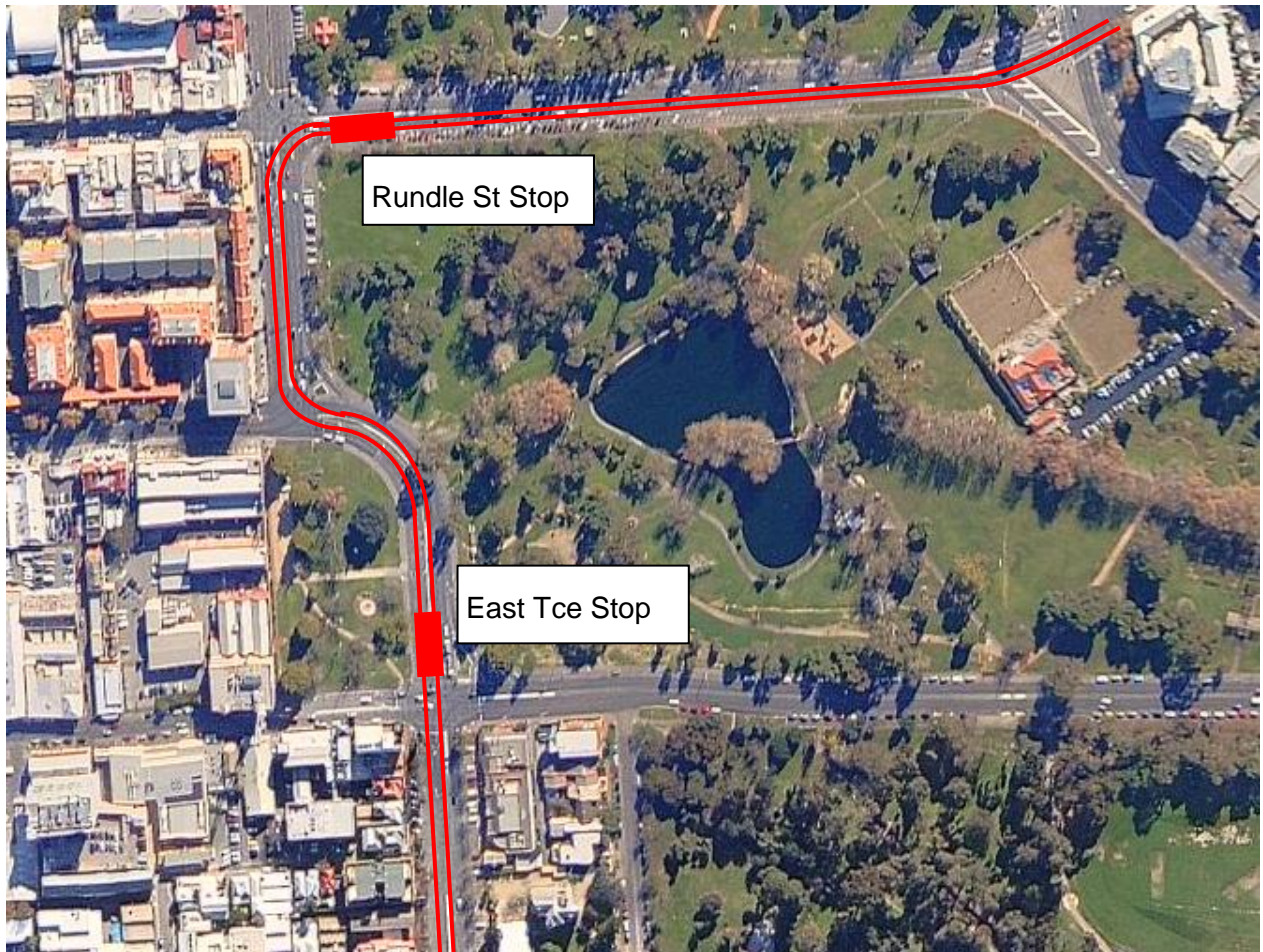
4.1 Proposed Route



4.2 Stops

Stop Name	Associated attractions/connections
Rundle Street	Rundle Street entertainment precinct
East Terrace	
Hutt Street	Hutt Street entertainment precinct
Pulteney Street	
Victoria Square	Central Markets, link to Coast to Coast line
Market	Central Markets, Chinatown, Adelaide CBD Bus Station
West Terrace	
Mile End	Santos Stadium, ETSA Park

4.3 Detailed Section Route



Dedicated two way light rail line in the centre of Rundle Road and East Terrace to avoid traffic disruptions.

Rundle Street stop located on Rundle Road on either side of the East Terrace intersection, similar to existing City South stop, to allow pedestrian crossing at the Rundle-East Terrace traffic signals.

East Terrace stop located on East Terrace prior to the Pirie Street intersection, to allow pedestrian crossing at the Pirie-East Terrace traffic signals.

Two way light rail line becomes non-dedicated (within traffic lane) on Hutt Street.



Two way non-dedicated light rail line (within traffic lane) on Hutt Street. It is not intended that stops be located on Hutt Street, as this would disrupt the flow of traffic.

Dedicated two way light rail line in the centre of Wakefield Street to avoid traffic disruptions.

Hutt Street stop located on Wakefield Street, west of Hutt Street intersection to allow pedestrian crossing at the existing Hutt-Wakefield traffic signals.

Pulteney Street stop located on Wakefield Street, east of Pulteney Street intersection to allow pedestrian crossing at existing Pulteney-Wakefield traffic signals.



Dedicated two way light rail line in the centre of Wakefield Street to avoid traffic disruptions.

Victoria Square stop located in Victoria Square, east of north bound King William Street intersection to allow pedestrian crossing at the existing King William-Grote traffic signals.

Connections provided to existing Coast to Coast light rail line.

Dedicated two way light rail line continues in the centre of Grote Street.