

# VICTORIA SQUARE ADELAIDE

**THE CONCEPT**  
VICTORIA SQUARE IS THE CENTRE OF THE CITY, A PLACE TO BE OCCUPIED AND ENJOYED BY THE CITIZENS OF ADELAIDE WHO NEED CEREMONY AND PLEASURE IN A PLACE BOTH FORMAL AND INFORMAL, PRACTICAL AND PLAYFUL. THE LAYERS OF HISTORY, CULTURES AND CLIMATES WHICH HAVE CREATED ADELAIDE HAVE BEEN DEVELOPED INTO A DESIGN CONCEPT AND GENERATED AN ARCHITECTURAL AND URBAN DESIGN PROGRAM.

**CEREMONIAL SQUARE**  
DEMONSTRATIONS, MARCHING BANDS, MILITARY PARADES AND GRAND CIVIC FUNCTIONS ALL REQUIRE A LARGE CENTRAL CEREMONIAL SPACE WHICH ADELAIDE CURRENTLY LACKS. THIS PROPOSAL ADDRESSES THIS SITUATION AND PROVIDES A SPACE WHICH, IN THIS MEANWHILE, CAN HOST ACROBATS, CONVERS AND STROLLING COUPLES, SHOPPEARS, OFFICE WORKERS, PROTESTERS AND CHILDREN AT PLAY.

**PATHS & AVENUES**  
PEOPLE AND WHEELCHAIRS CAN MOVE FREELY ABOUT THE SQUARE. STAIRWELLS TO THE CARPARK ARE DESIGNED AS ARCHITECTURAL ELEMENTS IN THE LANDSCAPE AND SUPPORT SHELTERED MEETING PLACES AND SHADDED RELAXATION AREAS. LIGHTWELLS ILLUMINATE THE ENTRY/EXIT POINTS ON CARPARK LEVEL 1. WHEELCHAIR RAMP LINK LEVEL 1 TO THE PLAZA LEVEL. PLANNING THE CAFE IN THE SHOPPING ARCADE. VISTAS OF NOTABLE BUILDINGS ARE TURNED BY 3 MAIN AVENUES.

**THE COLUMN**  
THE COLUMN IS A LANDMARK FOR THE CITY, THE HILLS AND THE PLAINS. A LIGHT, TRANSPARENT STEEL AND GLASS TOWER, CARRYING 2 EXTERNAL LIFTS AND AN INTERNAL FINE STEEL PLANTS CASCADE FROM THE CENTRAL CORE, SURROUNDED BY STABILISING CABLES WHICH EXTEND THE FORM AND PROPORTION OF A CLASSICAL DORIC COLUMN. THE 'CAPITAL' CONTAINS VIEWING PLATFORMS (INCORPORATING RETRACTABLE FINE ESCAPE CHUTES), A SHOP AND SECURITY DETENTION. THE TOWER IS TOPPED BY ELECTRONIC COMMUNICATIONS ANTENNAE.

**THE GARDENS**  
GARDEN PLOTS REPRESENTING THE MANY DIVERSE CULTURES THAT HAVE HELPED CREATE ADELAIDE ARE INTERWOVEN BY PATHS WHICH SYMBOLISE THE UNITY OF AUSTRALIAN MULTICULTURALISM. THE GATEWAYS, THE LANDSCAPING AND THE PLANT SPECIES IN EACH GARDEN EXPRESS THE ORIGINS AND THE FINEST SENTIMENTS OF EACH CULTURE, AND MAY HAVE COMMUNITY INVOLVEMENT IN THEIR PLANNING AND DESIGN.

**SCULPTURE COURT**  
THE SCULPTURE COURT MIGHT TAKE THE FORM OF (SCULPTURE OR GARDENING), IT MIGHT BE PERMANENT OR ONLY FOR TEMPORARY DISPLAYS. SITUATED IN THE HEART OF THE BUSINESS AND LEGAL COMMUNITY, THE SPACE WOULD BE IDEAL FOR OUTDOOR EXHIBITIONS.

**BIKES & TRAMS**  
THE TRAM COULD BE RETAINED TO BRING A MUCH-LOVED AND RARE REMINDER OF 'MOBILE HERITAGE' INTO THE CITY'S HEART. BICYCLE PATHS RUN DOWN THE AVENUES AND ALSO ACCOMPANY PEDSICARS ALMOST THE ENTIRE AREA OF THE SQUARE IS FREE FOR PEDESTRIAN USE.

**THEATRES**  
THE AMPHITHEATRE IS A FREE THEATRE SPACE, COMPLEMENTING THE CONCERT HALL, PROVIDING BENEATH THE MAZE AND BRINGING LIGHT AND AIR (AND A FINE ESCAPE ROUTE) TO THE UNDERGROUND FACILITIES. THE CONCERT HALL HAS A FULL 1000 PERSON CAPACITY WITH A BOX OFFICE, EVALUATING GRAFT STREET AT THE END OF THE PEDESTRIAN LINK FROM THE HILTON.

**THE MAZE**  
THE MAZE IS ADELAIDE'S 4 SQUARES OF HEDONISM, HUSTLE, VENTURE AND LIGHT AND RESTING PLACES AROUND 'WINE GLASS' FOUNTAINS. THE MEMORIAL TO CAPTAIN CHARLES STUART PERSISTS OUT OF 'VICTORIA SQUARE' IN THE CENTRE. THE MAZE IS ON THIS 'ROW' OF THE CONCERT HALL AND HELPS PREVENT EXCESSIVE CONGREGATIONS OF PEOPLE THERE. THE MAZE IS ALSO A BLIND GARDEN - A TRICKY SCENTED PASSAGE FOR HEDONISTS WITH HEDONIST SENSE.

## THE DESIGN CONCEPT Layers of Structure, Meaning and Purpose

<p><b>1 THE ORIGINAL LANDSCAPE</b> THE ORIGINAL LANDSCAPE IS FORMALLY REINTEGRATED AND DOMINATES THE PERIPHERY OF THE SQUARE.</p>	<p><b>2 GEOMETRY</b> THE '2 SQUARES' PROPORTIONING OF VICTORIA SQUARE, CONSIDERING THE GEOMETRY OF THE NEW LANDSCAPE AND DETERMINES THE COLUMN HEIGHT.</p>	<p><b>3 BUILDING STRUCTURE</b> THE STRUCTURAL GRID OF THE BUILDING IS DETERMINED BY CAR PARKING REQUIREMENTS.</p>
<p><b>4 IMMIGRANT CULTURES</b> THE IMPACT OF IMMIGRANT CULTURES IS REFLECTED IN THE LANDSCAPING AND THE PRESENCE OF 2 THEATRES.</p>	<p><b>5 MEETING PLACES AND CEREMONIAL SPACES</b> LARGE AND SMALL, FORMAL AND CASUAL. SPACES ARE CREATED FOR MEETING AND FINE CEREMONY.</p>	<p><b>6 SERVICES</b> PLANT ROOMS, VENTILATION TOWERS AND REST ROOMS DETERMINING CERTAIN FEATURES IN THE PLAN.</p>
<p><b>7 PATHS, AXES AND AVENUES</b> PATHS FOLLOW 'NATURAL' ROUTES. AXES RELATE TO THE CITY GRID PLAN. AVENUES RESPOND TO LOCAL VIEWS.</p>	<p><b>8 COMMERCIAL FACILITIES</b> SHOPS, CAFES, RESTAURANTS, THEATRE AND KIOSKS SERVE THE PUBLIC AND ARE SERVED BY BUS AND TRAM SYSTHEMS.</p>	<p><b>9 RESPONSE TO CLIMATE</b> THE MAIN REQUIREMENT IS FOR SHADE AROUND MEETING PLACES AND ALONG PATHS AND AVENUES.</p>

**TOWERS**  
VENTILATION TOWERS OCCUPY EACH CORNER OF THE SQUARE. EACH REPRESENTS AN ELEMENT: AIR, EARTH, FIRE, WATER. EACH TOWER IS TOPPED BY A DECORATED CYLINDER. ABORIGINAL ARTISTS MIGHT BE COMMISSIONED TO MAKE MARQUETTES FOR TRANSLATION INTO THE DESIGN OF THE CYLINDERS, SYMBOLICALLY IDENTIFYING THE ORIGINS OF THE LAND AND MARKING ITS PLACE IN THE CITY.

**WATER GARDEN**  
THE WATER TOWER IS ALSO A FOUNTAIN, A SOURCE FOR THE DEEPER TOWER. WHICH LEADS THROUGH A LANDSCAPE INSPIRED BY AUSTRALIA'S NATIONAL HERITAGE TO THE POOL OF THE UNDERPASS. HERE THE PACING ELEMENT OF WATER REFLECTS THE SKY ABOVE THE DARKEST EARTH ON THE DARKEST CONTINENT.

**ELEVATORS**  
ELEVATORS FROM THE CARPARK INFORMATION BOOTH FOR REPRESENTATION SALES ON THE PLAZA.

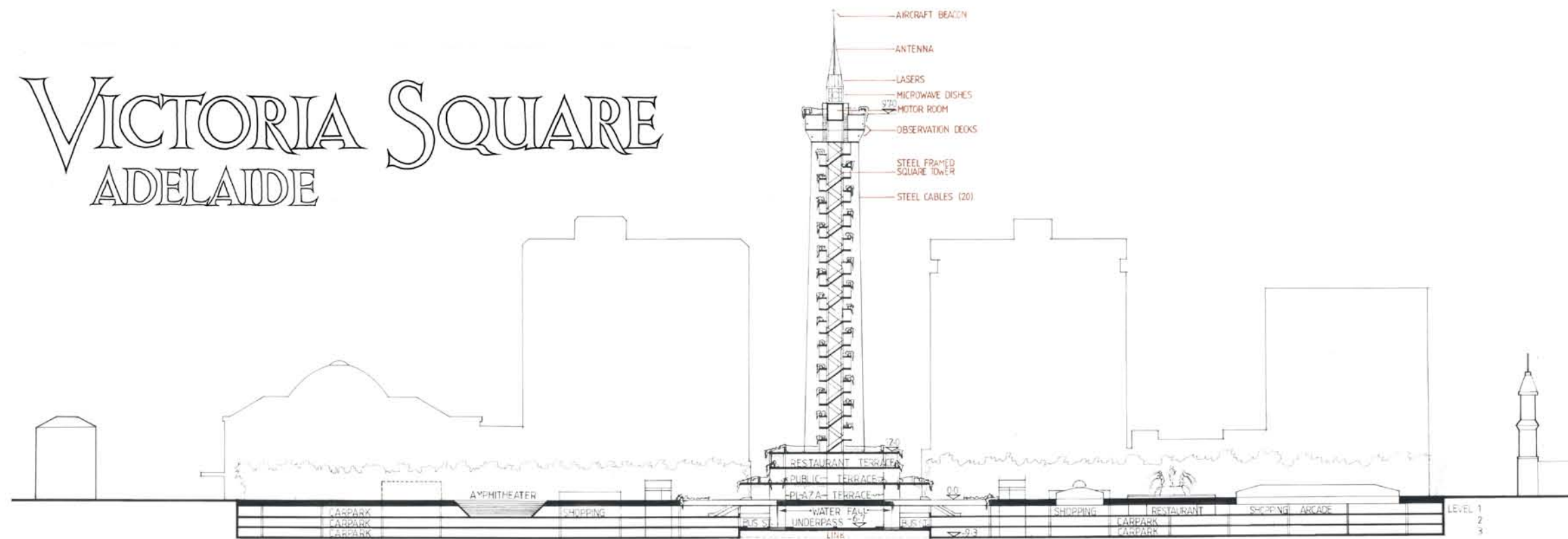
**PLINTH**  
THE PLINTH HAS 4 LEVELS: 1. FROM 'RAMPAGE' CONNECT THE PLINTH TO THE PLAZA LEVEL. WATERFALLS DROP DOWN TO THE ROAD BELOW. THE LIFT RISES FROM LEVEL 1 AND ESCALATORS RISE TO IT FROM ARCADE TERRACE. 2. THE PUBLIC TERRACE IS REACHED BY LIFT OR VIA SPIRAL STAIRS IN THE PLINTH EXTRACTS. 3. RESTAURANT TERRACE IS SIMILARLY REACHED. 4. TOP TERRACE IS A MAINTENANCE AND ESCAPE LEVEL. MEDICAL GROUPS AND SMALL PRECINCTS MIGHT PLAY ON THE TERRACES. PRESERVED POINTING OCCUPY RESTAURANT TO.

**UNDERPASS**  
THE ROBOTIC UNDERPASSES HAVE RAMPS FOR SEASIDE ACCESS TO KING WILLIAM, GOLF AND WAREFIELD STREETS. THE UNDERPASSES ARE DESIGNED TO BE SAFE, HELLOUT AND WELCOMING. THE ENTRY POINTS ARE MARKED BY SHELTERS WHICH ARE ATTRACTIVE PIECES OF STREET FURNITURE, INFORMATION, FOOTPATH LIGHTING AND PEDESTRIAN CROSSING LIGHTS, AND WITH ROOF PILES WHICH REFLECT DETAILS OF HERITAGE BUILDINGS SURROUNDING VICTORIA SQUARE.

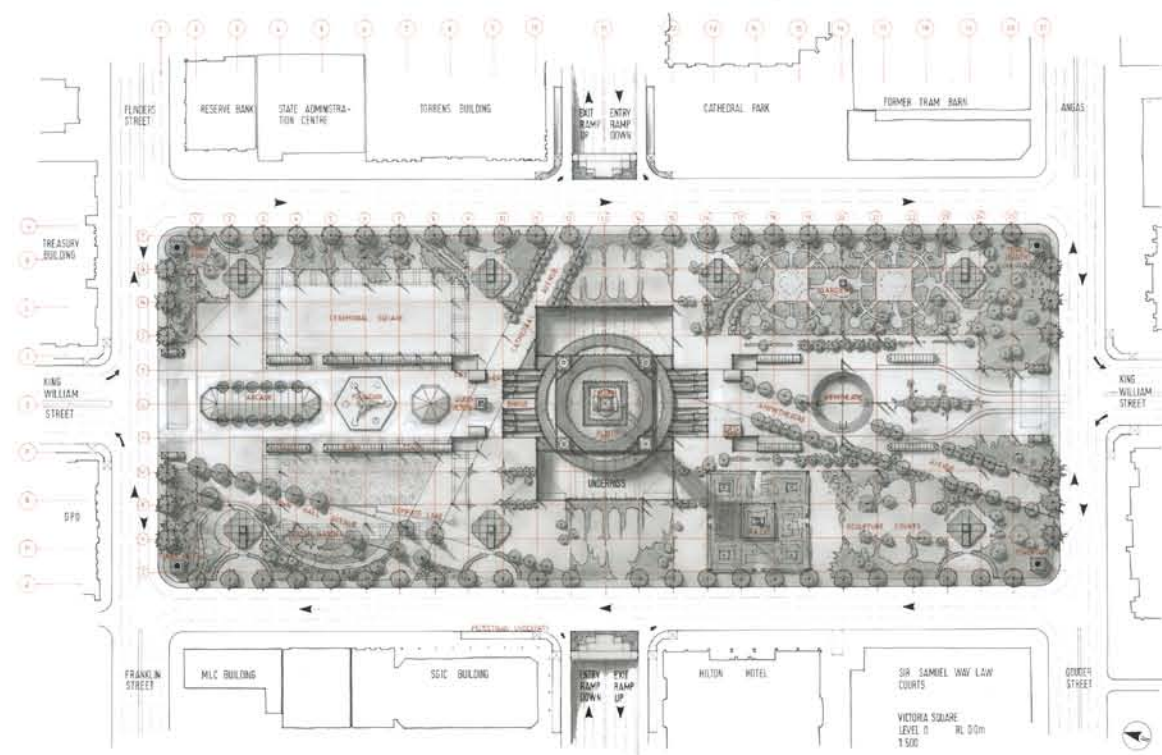
**DRIVERS' VIEW**  
FROM GOLF STREET - A VIEW OF THE HILLS IS FRAMED BETWEEN THE TERRACES AND PLINTH OF THE PLINTH. FROM WAREFIELD STREET THE COLUMN STANDS FINELY RIDGED AGAINST THE SKY. ENTERING THE UNDERPASS NATURAL LIGHT FILLS DOWN THROUGH THE FOLIAGE SHEDD LIGHTWELLS ILLUMINATING CAR PARK, ENTRY AND EXITS. THE COLUMN STANDS ABOVE. UNDER THE PLINTH DELIGHTFUL GARDENS OF WATER, FUTURE HOSES AND FOUNTAINS, BICYCLE PATHS, TRAFFIC AND CREATS A PLEASANT ENVIRONMENT FOR UNDERGROUND BUS STOPS.



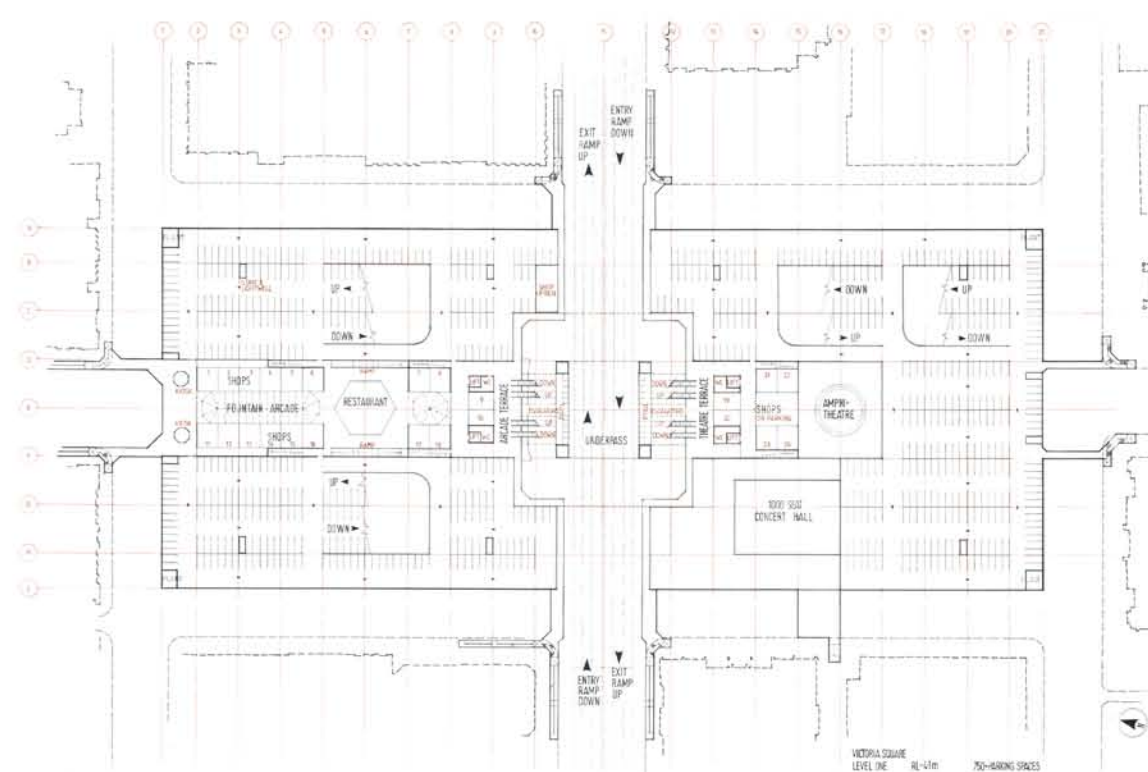
# VICTORIA SQUARE ADELAIDE



Cross Section



Ground Floor Plan



Typical Lower Floor Plan

# VICTORIA SQUARE DEVELOPMENT

Associated Architects